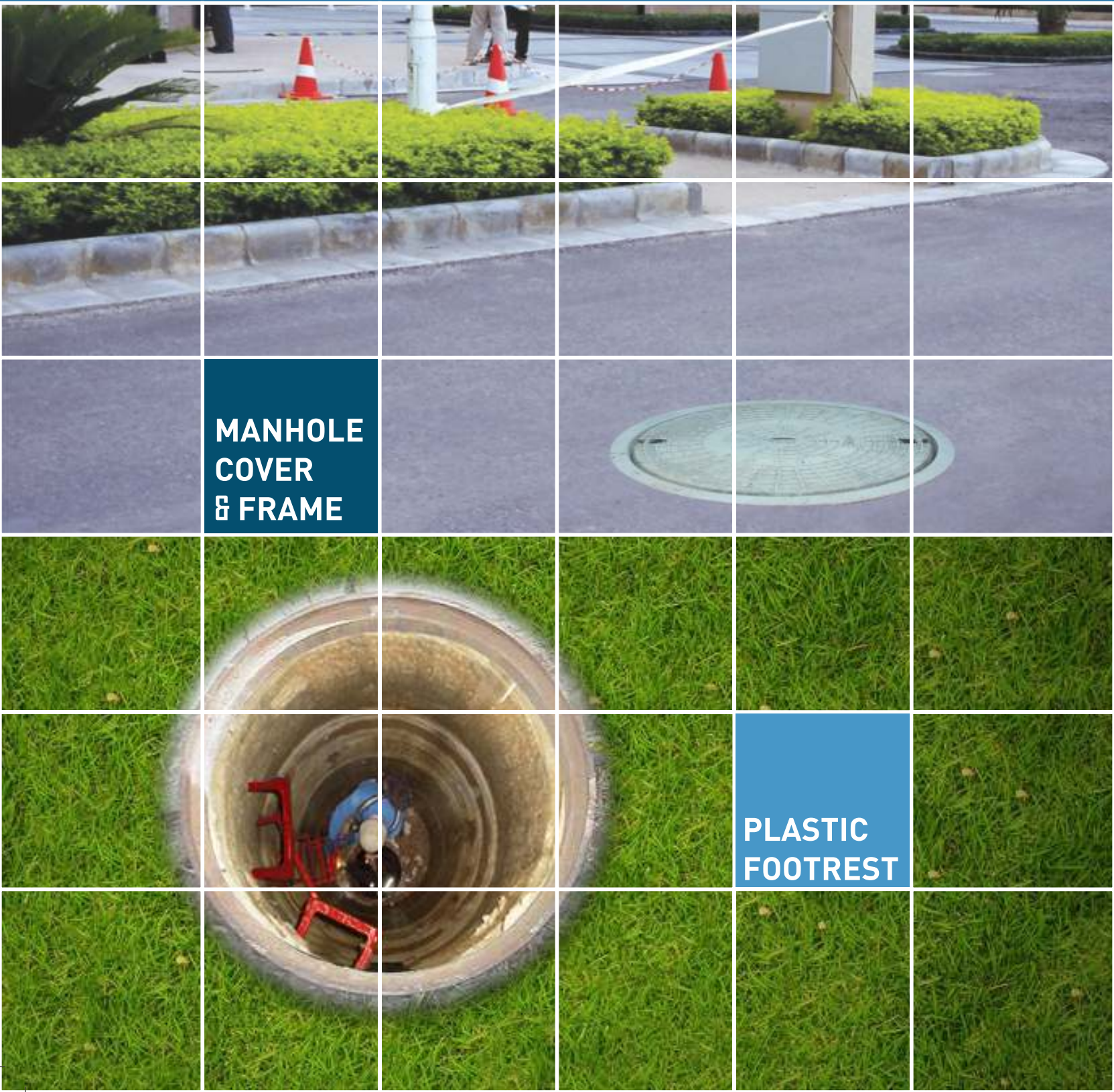




*“Home of Innovative & Quality
Solutions for Construction
since 1984”*

SEWAGE DRAINAGE



**MANHOLE
COVER
& FRAME**

**PLASTIC
FOOTREST**

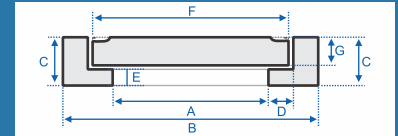


SEWAGE DRAINAGE

MANHOLE COVERS AND FRAMES AVAILABLE IN DELHI ONLY



All of our manhole covers and frames are manufactured using steel fabric reinforced concrete (SFRC) and are designed to meet load test requirement of IS-12592.



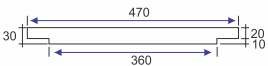
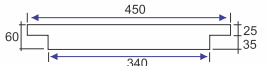
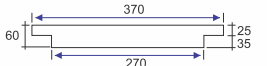
CAPACITY :- HD - 20 TON | MD - 10 TON | LD - 2.5 TON

Product Code	Product Description	Shape	Frame Details					Cover Details	
			A	B	C	D	E	F	G
MHCF - 01 ^(*)	Extra Heavy Duty - 35	Circular	560	895	175	75	75	715	100
MHCF - 03	Heavy Duty - 20	Circular	685	965	150	60	50	785	90
MHCF - 06 ^(*)	Heavy Duty - 20	Circular	560	895	155	75	75	715	80
MHCF - 08 ^(*)	Heavy Duty - 20	Square	600x600	855x855	130	50	50	710x710	80
MHCF - 10	Heavy Duty - 20	Square	450x450	700x700	135	50	60	550x550	75
MHCF - 11 ^(*)	Heavy Duty - 20	Rectangular	600x450	925x780	165	85	70	755x605	75
MHCF - 13 ^(*)	Medium Duty - 10	Circular	560	805	110	50	50	670	60
MHCF - 14 ^(*)	Medium Duty - 10	Square	600x600	810x810	100	50	50	710x710	50
MHCF - 15	Medium Duty - 10	Square	445x445	670x670	100	50	50	550x550	50
MHCF - 16 ^(*)	Medium Duty - 10	Rectangular	600x450	820x670	105	50	50	705x655	50
MHCF - 17 ^(*)	Medium Duty - 10	Rectangular	900x550	1200x870	135	50	65	1000x650	65
MHCF - 18 ^(*)	Medium Duty - 10	Rectangular	885x790	1365x1260	160	55	85	1005x910	75
MHCF - 19	Light Duty - 2.5	Square	455x445	615x615	80	30	40	500x500	35
MHCF - 20	Light Duty - 2.5	Rectangular	600x450	800x650	80	30	40	665x515	40
MHCF - 21 ^(*)	Gully Trap	Square	255x255	395x395	75	20	35	310x310	35
GGCF - 01 ^(*)	Gully Grating	Rectangular	500x450	700x655	125	30	55	570x520	70
GGCF - 02 ^(*)	Heavy Duty Gully Grating	Rectangular	500x450	795x745	150	55	50	620x570	100
GGCF - 03 ^(*)	Gully Grating	Rectangular	600x300	795x495	120	30	50	670x375	65

(*) above covers can be provided with holes

TANK LIDS



PRODUCT CODE	WT 01	WT 02	WT 03
DIMENSIONS			

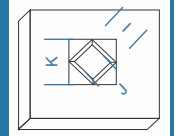
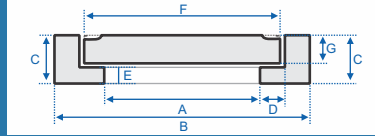


SEWAGE DRAINAGE

MANHOLE COVERS AND FRAMES AVAILABLE IN CHENNAI ONLY



All of our manhole covers and frames are manufactured using steel fabric reinforced concrete (SFRC) and are designed to meet load test requirement of IS-12592.



Product Code	Product Description	Shape	Frame Details					Cover Details		
			A	B	C	D	E	F	G	
MHCF-1	600 HD	Circular	600	920	165	75	75	760	90	
MHCF-2	560 HD	Circular	560	880	165	75	75	720	90	
MHCF-3	450 HD	Circular	450	775	165	75	75	595	90	
MHCF-4	900x900 HD	Square	900x900	1250x1250	200	100	100	1098x1098	100	
MHCF-5	900x450 HD	Rectangular	900 x 450	1230 x 780	160	50	70	1025 x 565	90	
MHCF-6	700 x 700 HD	Square	700 x 700	1000 x 1000	135	75	55	850 x 850	80	
MHCF-7	600 x 600 HD	Square	600 x 600	850 x 850	135	60	50	710	80	
MHCF-8	450 x 450 HD	Square	450 x 450	710 x 710	135	50	50	550	80	
MHCF-9	600 x 450 HD	Rectangular	600 x 450	850 x 700	140	60	60	720 x 570	80	
MHCF-10	600 MD	Circular	600	820	125	50	55	700	70	
MHCF-11	560 MD	Circular	560	810	105	50	50	665	60	
MHCF-12	900 x 900 MD	Square	900 x 900	1100 x 1100	120	50	50	998 x 998	70	
MHCF-13	900 x 450 MD	Rectangular	900 x 450	1230 x 780	140	50	70	1025x565	70	
MHCF-14	600 x 600 MD	Square	600 x 600	820 x 820	80	60	30	705	50	
MHCF-15	450 x 450 MD	Square	450 x 450	660 x 660	80	50	30	550	50	
MHCF-16	600 x 450 MD	Rectangular	600 x 450	840 x 690	100	55	50	710 x 560	50	
MHCF-17	300 x 300 MD	Square	300 x 300	500 x 500	80	50	30	400	50	
MHCF-18	600 x 600 LD	Square	600 x 600	800 x 800	85	35	45	670 x 670	40	
MHCF-19	450 x 450 LD	Square	450 x 450	610 x 610	80	30	40	510	40	
MHCF-20	600 x 450 LD	Rectangular	600 x 450	800 x 650	80	40	40	680 x 530	40	
MHCF-21	300 x 300 LD	Square	305 x 305	450 x 450	70	30	30	360	40	
MHCF-22	260 x 260 GT	Square	260 x 260	400 x 400	70	20	30	310	40	
Product Code	Product Description	Shape	Frame Details					Cover Details		Sump Cover
			A	B	C	D	E	F	G	
MHCF-6S	700 x 700 HD Sump	Square	700 x 700	1000 x 1000	135	75	55	850 x 850	80	150
MHCF-7S	600 x 600 HD Sump	Square	600 x 600	850 x 850	135	60	50	710	80	150
MHCF-14S	600 x 600 MD Sump	Square	600 x 600	820 x 820	100	60	50	705	50	150
MHCF-15S	450 x 450 MD Sump	Square	450 x 450	660 x 660	80	50	30	550	50	110

CAPACITY :- HD - 20 TON | MD - 10 TON | LD - 2.5 TON

4 GOOD REASONS WHY YOU SHOULD USE KK MANHOLE COVERS AND FRAMES

(BESIDES THE FACT THAT THEY ARE STRONG)

1. Our Covers will always be removable from the frame

In typical IS-standard cover a mild-steel strip is provided around the cover as edge protection. This strip tends to get corroded over a period of time which eventually results in cover getting permanently stuck in the frame. Our covers do not suffer the same fate as we don't provide ms strip.



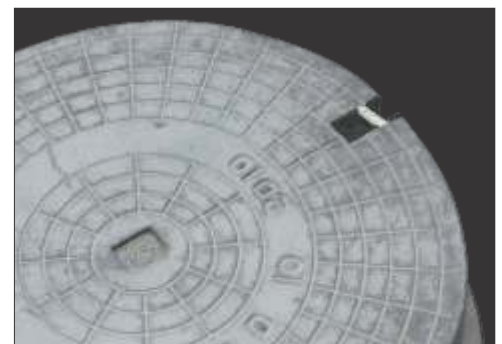
2. Our covers are easy to lift

We provide hooks on the periphery of the cover. This allows a workman to easily lift the cover using a pick axe while getting leverage from the frame.



3. Our hooks will last a lifetime

We hot dip galvanize our hooks which inhibits corrosion and ensures that our hooks will last a long time without failure.



4. Our holes will never get choked.

Diverging configuration of the holes ensures that any debris either stays on top or passes through.

INSTALLATION GUIDELINES

1. Do not cantilever the frame

RCC Frame is not built to take on tensile loads. However, it is able to take sufficient compressive loads. Therefore the frame should be fully supported on the support structure, i.e., Chamber walls or Slab. The frame may fail if it is not fully supported

2. Please ensure that the structure on which the Frame is placed is able to take the load which is expected from the RCC manhole cover

Please note that loads acting on the RCC Manhole Cover and Frame are transferred to the chamber walls or slab on which the frame is placed. Therefore, the support structure (Chamber wall or Slab) should be designed and built to carry the loads. Not doing so may result in failure of the support structure. In some cases this gives an impression that the cover has failed while in reality the support structure buckles or collapses under the load.

3. Never make the Frame a part of the Slab

In some cases the workmen while making arrangements for the Frame, casts the frame along with the slab (refer to Figure 1). In doing so the thickness of the slab on which the frame is resting is very thin. This will result in failure of the structure as the slab on which the frames rests is not able to bear the load expected of the RCC Cover.

4. Prepare the top of the brick manhole by concrete so as to make it leveled

Often when workmen are constructing a conical manhole from brick, they have a tendency to keep the RCC frame on top of the brick manhole while leaving a big gap between the top surface of the brick manhole and the bottom surface of the RCC frame (refer to Figure 2). They are working with the assumption that eventually the gap will be filled by mortar. In reality, this gap is never filled properly because of the inward slope of the inside surface of the brick manhole. As a result, the concrete filled in the gap will never have perfect contact with the bottom of the RCC Frame. This may result in sheer failure of the frame seating because the frame is not designed to carry tensile loads.

Figure 1: Right and Wrong Way of Casting Slab

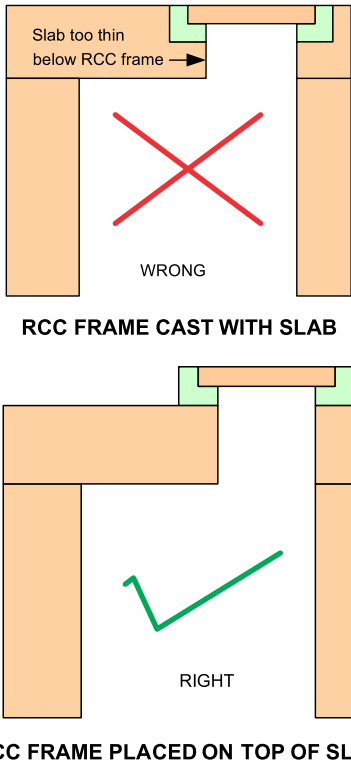
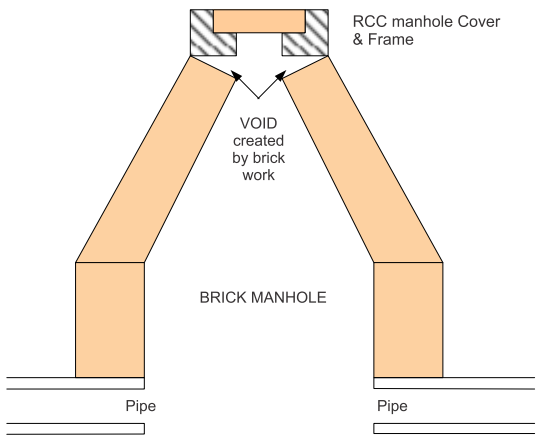


Figure 2: Problem with Construction of Brick Manhole





SEWAGE DRAINAGE

GGCF - 01



MHCF - 06 Plain



MHCF - 06 With Hole



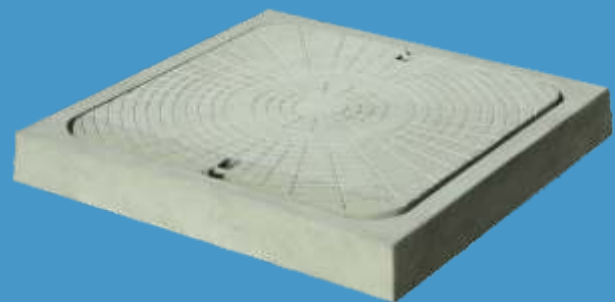
MHCF - 08



MHCF - 10



MHCF - 14





SEWAGE DRAINAGE

MHCF - 15



MHCF - 16



MHCF - 19



MHCF - 20





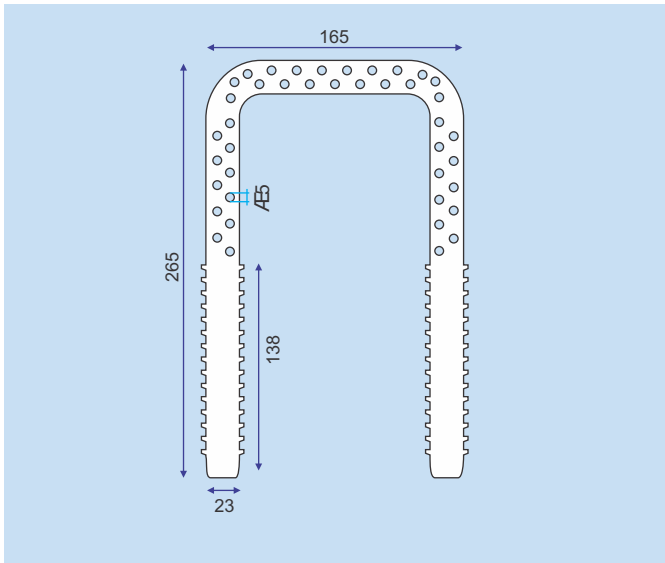
SEWAGE DRAINAGE

PLASTIC FOOTREST



KK plastic footrest is a uniquely designed polypropylene plastic encapsulated steel reinforced manhole safety step. It is a superior alternative to conventional mild steel / cast iron step. It offers unmatched resistance to all types of corrosive environments often characteristic of sanitary sewers. It is resistant to most acids, bases, vapors and microbiological attacks. Its unique design and colour provides added safety to the personnel.

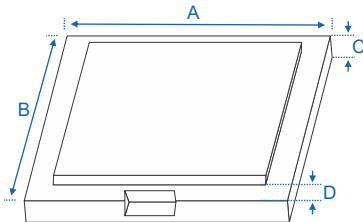
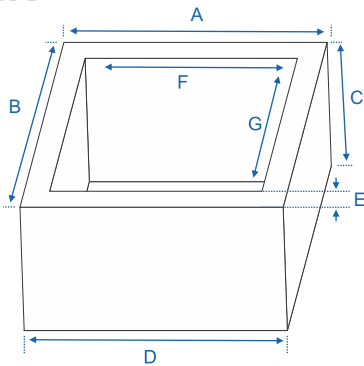
PRODUCT DIMENSIONS



Technical information

- Min 3 mm thick polypropylene copolymer is injection moulded around a 12 mm dia tor-steel bar.
- Orange color
- Min overall length 260mm & width of 165mm.
- Protruding legs have a 2mm tread on top surface for making the surface anti-skid.
- Designed to withstand the bend test and chemical resistance test as per specification.
- Polypropylene copolymer conforming to ASTM D-4101/IS-10910
- 12mm dia Fe-415 Steel reinforcement conforming to IS - 1786.

EARTHING PIT WITH COVER



Product Code	A	B	C	D	E	F	G
Pit	350	350	300	400	37.5	275	275
Cover	355	355	50	40	-	-	-